



KONICA MINOLTA

# HOCKEY DRIBBLE

[www.hockeyqld.com.au](http://www.hockeyqld.com.au)

Issue 2, June 2005

## Toowoomba and Brisbane

### Victorious in Four'N Twenty Premier League



Over 270 of Queensland's top men and women hockey players competed at the elite intra-state Four'N Twenty Premier League at the State Hockey Centre at Colmslie in early May, with Toowoomba and Brisbane victorious.

Toowoomba, led by Hockeyroo pair Angie Skirving and Karen Smith, won the competition following an extra-time goal against Brisbane.

Brisbane was up 2-0 after 25 minutes following a 2-goal scoring spree by Kathryn Flood. With the scores locked at full-time and after the first period

of extra time drop off, Toowoomba broke the deadlock to clinch the title in the 81<sup>st</sup> minute of the game with a deflection goal to Jessica Windsor.

In the men's final, Brisbane got away to an early lead over Townsville and hung on to win 5-2. In the men's final, Brisbane got away to an early lead scoring 3 goals in the first half. Brisbane moved another goal ahead in the 37<sup>th</sup> minute, with a goal by captain Blair Brown, before Townsville got one back through a goal to Ashley McCulloch in the 40<sup>th</sup> minute.

#### FINAL PLACINGS

##### MEN

1st Brisbane  
2nd Townsville  
3rd Ipswich  
4th Brisbane 2  
5th Cairns  
6th Maryborough  
7th Mackay  
8th Gold Coast

##### WOMEN

1st Toowoomba  
2nd Brisbane  
3rd Cairns  
4th Gold Coast  
5th Bundaberg/Ipswich (tie)  
7th Brisbane 2  
8th Townsville

#### AWARDS

##### Four'N Twenty Player of the Series

Men - Stephen Lambert  
Women - Karen Smith



##### Four'N Twenty Best Player in Final

Men - Adam Barry  
Women - Angie Skirving

##### Four'N Twenty Most Promising Player

Men - Jacob Burns  
Women - Ellen Seaniger

### Greg Browning Continues as Blades Coach

Queensland Blades Coach, Greg Browning, has committed to his role with Hockey Queensland until the completion of the 2008 season. Greg agreed to continue in the position for another three years, after a personal reassessment of his short and medium term goals in hockey.

Greg has held the position of the Queensland Blades Coach and QAS Men's Head Coach since 1998, which included coaching the Blades to back-to-back Australian Hockey League Championships in 2003-2004.

### Mark Rutter 2005 Scorchers Coach

Hockey Queensland is pleased to announce that the Scorchers coach and QAS/NTC Women's program Coach for the 2006-2008 seasons will be Mark Rutter, previously the ACT's Women's National Training Centre (NTC) Coach.

Mark comes to Queensland with a strong history in national and international coaching having held the position of National Assistant Coach at the Commonwealth Games in 2002, and being a finalist for ACT Coach of the year in 2002 and 2004.



KONICA MINOLTA

# Down Memory Lane ... with Nola Slade (nee Welch)

**Born :** 10 April 1938  
**Birthplace:** Brisbane  
**Position:** Forward  
**Qld Representative:** Open 56-58, 60-62, 64, 66-67  
**Australian Open Representation:** Open 1959, 1962

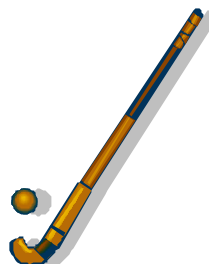
## Highlights:

1959 – IFWHA – World Tournament in Amsterdam – 15 nations competed. Playing in the semi final v Netherlands which we lost 2-3. Instead of winning a silver medal each player in the tournament received a bunch of tulips. No trophies or awards were played for.

We were undefeated on our tour prior to Amsterdam. Played in Columbia, Spain, France, Belgium, England and Holland. The tour lasted 5 ½ months and we travelled by ship.

1962 – 4 ½ week tour of Malaysia, undefeated, this was the first tour to Malaysia by an Australian team, the hospitality was wonderful.

1961 – Captaining the Qld team and winning the Australian Championships at Downey Park. A “first ever” for QWHA.



**Nola Slade** – Hall of Fame Inductee.

In the last edition of the Hockey Dribble, the following details were inadvertently excluded from Nola Slade's details.

Nola is a Life Member of Hockey Queensland, Gold Coast Hockey Association, Valley Women's Hockey Association and is Long Service Member of Brisbane Women's Hockey Association.

## Hookin2Hockey



Hook in2 Hockey is Hockey Australia's Targeted Sport Participation Growth Program run in partnership with the Australian Sports Commission that is fully endorsed and supported by Hockey Queensland. The program has been designed as a safe and fun introduction to hockey for people of all ages.

The Hockey Queensland Board in consultation with all HQ affiliates has agreed to make Hook in2 Hockey the new introduction program to hockey, effective from January 2006.

Hook in2 Hockey can be conducted over six to eight sessions and has a Game Sense focus, which includes participants playing small sided games to introduce the skills used in a game of hockey.

All participants receive an Equipment Pack of a stick, shin guards and ball as part of the program fee of just \$40, along with a show bag containing a national team poster, sticker, fridge magnet and water bottle plus Hockey Queensland promotional material.

The Hook in2 Hockey Centres receive, at no cost, the resources required to conduct this program. These include promotional brochures, a Centre Administration CD, Games Guide (session plans), leaders' apparel (t-shirts and hats) and discounted coaching/ training resources.

This will mean that sign on for all clubs in Queensland will register players in the age group 5-10 into Hook in2 Hockey. Whilst the emphasis of this initiative is directed at the 5-10 age group, the Hook in2 Hockey program can be promoted as a beginners program to all ages.

For more information about Hook in2 Hockey, please contact Ebony or Annette at [hookin2hockey@hockeyqld.com.au](mailto:hookin2hockey@hockeyqld.com.au) or phone 3399 6577, or log onto [www.hockey.org.au/clubhouse/](http://www.hockey.org.au/clubhouse/)



# Message from the President

When I wrote a similar column for the Hockey Dribble at this time last year I wrote about the disappointment and disillusionment with our failure to receive the AIS Hockey Unit for Brisbane. However I also said that despite that set-back, the upgrading of the State Hockey Centre would and must succeed.

Thanks again to the generosity of the Queensland Government the carpet on the main pitch has been replaced, with the second pitch to receive similar treatment in the next few years. Plans are underway to provide more hockey car parking and to do something about what the Hockey Australia President has described as "that terrible grandstand."



Ken McElligott

So the State Hockey Centre is now truly the centre piece of hockey in Queensland and the improvements will continue. Importantly, it has all been achieved without any increase in fees paid by the centres as I promised.

Of course an essential part of all of this has been the opening of the refurbished Colmslie Sports Club. Not only does the club provide a service to players and supporters but it is also the source of sizeable revenue to Hockey Queensland and the relevant Associations.

Finally, I have to say that the current boom in population growth in Queensland represents a challenge to all hockey administrators. The forecast has predicted an extra one million people will settle in south east Queensland over the next twenty years with similar growth anticipated in some regional areas.

Naturally, we want some of these people to play our wonderful sport. So there will be new developments, new schools etc and we need to be sure that we are there to meet the challenge.

## Development Project

Hockey Queensland is investigating the opportunities for growth at the grassroots level in Brisbane over the next five to ten years, through a research initiative.

As part of the project work, Hockey Queensland is looking into statistics involving expected population growth, demographic shifts and changes in recreational habits throughout the Brisbane metropolitan area.

A number of issues that Hockey Queensland believes have impacted on, and will continue to impact on hockey at a foundation level, include human and financial resources, and capital works.

Hockey Queensland is aiming to illustrate the opportunities for growth in these areas, to enable programs to be put in place over the upcoming years to ensure the growth and strength of our sport.

**medibank**  
P R I V A T E

**Proud sponsors  
of the State Wide  
Secondary Schools  
Competition, the  
Medibank Private  
Schools Cup.**

Medibank Private Limited ABN 47 080 890 259  
is a registered health benefits organisation.

# What's Coming Up ...

1 – 22 June	Hockeyroos North American Tour	Virginia Beach, USA & Vancouver, Canada
11 – 13 June	State Open	Male & Female
11 – 13 June	State Vets 40+, 45+	Male
20 June – 24 June	State Under 13	Female
20 June – 24 June	State Under 13	Male
27 June – 1 July	State Under 15	Female
27 June – 1 July	State Under 15	Male
29 June – 10 July	8 <sup>th</sup> Junior World Cup	Male
4 – 8 July	Southern Skies	Male & Female
12 – 23 July	National Under 21	Female
13 – 16 July	QSS 12 years	Male & Female
6 – 16 July	National Under 18	Male
29 – 31 July	State Veterans	Female
		Bundaberg
		Ipswich
		Gladstone
		SHC
		SHC
		Rockhampton
		Rotterdam, The Netherlands
		State Hockey Centre
		Darwin
		Ipswich
		NSW
		Mackay

## Welcome Aboard

Welcome Aboard to Tina Latham, Hockey Queensland's Bundaberg Regional Development Officer who started in March.

# Spotlight on Redcliffe HA

Our 1<sup>st</sup> Division Mens Captain/Coach Kent Harle (fondly known around the club as Silly), played his 300<sup>th</sup> game in top level hockey on Saturday the 21<sup>st</sup> of May.

This is a historic milestone and a great achievement for Kent, with his team and club mates all very proud of him.

Kent started playing hockey for Redcliffe in 1978 as an active 5 year old, and has continued his commitment to his club to this day.

With many representative caps to his name, Kent has always played an active part in bringing our young players into the senior ranks, coaching and being a supportive mentor and role model. Many of the boys that he coached through their junior years now join him again in 1<sup>st</sup> Division. A few to name are Kyle Murphy, Justin Reid, Beau Leadbetter, Trent Corey and Aaron Kreis.

Kent made his debut run in top grade in 1992 where Redcliffe defeated Commercial 4 goals to 1 and Kent scored a goal.

Brisbane Representative Teams 11  
 Queensland Colts 1994, 1995  
 Brisbane Blades 1995 through to 2000  
 Queensland Indoor Team 2002, 2003  
 Premier League Team  
 Winner of the Brisbane Best and Fairest Medal in 2000 and 2002

**Shop with us and earn \$\$\$ to support your own club**

KYOCERA KX1

\$0\*

UPFRONT

On a \$30 Member plan for 24 months then INTEREST FREE phone repayments of \$20.79 per month\*

+\$200

BONUS CREDIT™



Visit [www.hockeyqld.com.au/rewards](http://www.hockeyqld.com.au/rewards) for reward details and participating store locations



National Dealer of the Year 2004

Telstra Dealer



\*Credit applied no later than second bill and is not transferable or redeemable for cash. \$200 payable if you deactivate your service, move to a pre-paid or casual plan or other non-approved plan, reduce your monthly spend below \$30 or deactivate loan service within 12 months of collection. †Agreed customers can take up a Mobile Repayment Option (MRO) and repay \$10 (before GST) for the phone over 24 months. Customers terminating early must repay balance owing on phone as well as apply other early termination charges on the mobile plan. Final monthly repayment may be higher to cover total MRO amount. Member over 20 miles is \$20 plus call charges. Early termination charge applies. No trade value. ‡Acquired under write-off 30/6/04.



# A WEEK IN THE LIFE OF JAMIE DWYER



## Monday:

I usually get up around 9:30am after a tough game on the Sunday. My flatmate (Luke Doerner) and I have some breakfast and then get into the car and on our way to gym. Its a twenty minute drive from our place in Amsterdam to the fitness centre which is in Bloemendaal. Bloemendaal is the club which I play for.

After an hour and a half in the gym and thirty minutes in the sauna I head back to Amsterdam. After getting home, it's then lunch time and then time to check emails and other internet stuff. Then off to my girlfriend's place for a yummy dinner and a movie.

## Tuesday:

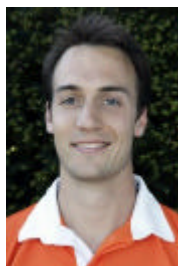
On most Tuesday mornings like this one Luke and I get on our bikes and go for a ride through Amsterdam. Today we decided to go to the history museum. Luke's girlfriend and my sister who are here on holidays, both join us.

We have some lunch in the city and then go home to get ready for training. We arrive at training two hours before our training session because we both coach the junior players.

So after two hours of coaching the juniors its then into our training. I meet all my team mates in the change rooms before heading out for an hour running session. After we finish the running it's then into two hours of stick and ball. After a pretty hard session we hit the showers before the club serves up dinner for the whole team. Then its back home and into bed around 11:30pm.

## Wednesday:

This Wednesday morning I had to go down south to Delft, thats where my stick sponsor Grays are. After picking up a few sticks, grips and shirts I was heading to the gym. On Wednesdays I meet Teun De Nooijer, Karel Klaver and a few other team mates for a hard gym session. Wednesday nights are pretty cruisey and most times we go into town and have dinner.



Teun De Nooijer

## Thursday:

Thursday mornings are pretty relaxed. I head down to a phone centre and give family and friends a call back in Australia. I check my emails while I'm there and then head home for some lunch. Thursday trainings are similar to Tuesdays but without the running. Its the most intense training of the week and usually you leave the session with tired legs.

The same as Tuesdays, after training we have a dinner prepared for the team. After that it's home for a good night's sleep or as they say over here in Holland, a lekker slaapen.

## Friday:

This week, Luke, his girlfriend, my sister and I decided to go for a drive up to the north of Holland. We arrived at a place called Marken. It was a really small village and the people there looked like Holland was thirty years ago. They were still wearing clogs. It was a very beautiful little fishing town.



On Friday nights we have training again. It usually takes an hour to get to Bloemendaal from Amsterdam on Fridays because of the traffic. After the long trip we get into training again. Fridays are usually set drills like corners and free hits outside the circle and that kind of thing. After training we again have dinner prepared.

When I get home I usually go for a ride through the city. There is a lot going on on Friday nights, its good to go out and see the sites but sometimes its just too cold.

## Saturday:

This is the most relaxing day of the week. In the morning I go to the markets and then to a place for lunch. I go to the same place every Saturday for lunch with my girlfriend. Its called Baton and I think its the best lunch place I have ever been to. Saturday afternoon I don't get up to much at all. I just watch a movie or go for a walk. Saturday night



Karel Klaver

## A WEEK IN THE LIFE OF JAMIE DWYER ... ctd

I cook up a nice lasagne and then off to bed.

### Sunday:

I love Sundays because its game day.

This week we are playing HCKZ. They have a few good players and it should be a good contest. At 12:30pm the team meets at someone's place to have some lunch and the team talk. At 1:30pm we head to the ground, get changed and start the warm up. We play every Sunday at 2:45pm. One week at our home ground and the next week is away - similar to Rugby League and AFL. Five

minutes before the game the crowd starts to get pretty big. Today we got about two thousand people to the game. That's about normal but when the finals are on you get about six or seven thousand people to the game. We end up winning the game quite easily in the end.



After the game all the team and supporters go to the clubhouse for a few drinks and some food. It is a great atmosphere after the games on Sundays.

And that sums up a week in my life.

## State-wide Umpire Mentoring Program

Hockey Queensland's initiative program, the State-wide Umpire Mentoring Program celebrates 12 months implementation in June. The program has been running successfully in the five Queensland regions of North Queensland, Central Queensland, Wide Bay, South-East Queensland and Brisbane.

Three Australian accredited umpires per region provide services, communication and support to other umpires, with the flexible program designed around the needs of the officials of that region. Programs include one-on-one mentoring and group support, and are aimed at continuing to improve the standard of umpiring throughout Queensland. Jan Hadfield coordinates the running of seminars and workshops that are aimed to provide consistency in rulings and a practical support network for umpires at all levels.

## ... From the Umpires ...

Dealing with misconduct following the conclusion of a game.

It is a common misapprehension by some players to believe they are no longer under the control of umpires and technical bench when the final whistle sounds. THIS IS NOT THE CASE.

Internationally and Nationally, players, coaches, officials and umpires remain under the jurisdiction of the Tech Bench for a period of 30 minutes after the game has ended. During this time, "cards" may be issued or "upgraded" for any offence which is contrary to the spirit of the game.

Similarly, outside this 30 minute time-frame, players, coaches and team officials are required at ALL times to conduct themselves in such a way that "the game is not brought into disrepute". This includes any abuse or aggressive, confrontational behaviours directed towards umpires. Disciplinary action may be taken at any time after the match depending on the circumstances.

Jan Hadfield, FIH Umpires' Manager  
Hockey Australia, Officiating Commission,  
Hockey Queensland, Board of Directors

# QUEENSLAND SQUADS NAMED

All Squads were named at the completion of the Four'N Twenty Premier League

## Queensland Scorchers

Wendy Alcorn  
Renee Allen  
Teneal Attard  
Shannon Bain  
Jane Bennett  
Madonna Blyth  
Danette Boland  
Hayley Childs  
Patrice Donnelly  
Suzi Faulkner  
Renaë Holmes  
Nikki Hudson  
Amy Korner  
Carly Lennon  
Emma Meyer  
Cindy Morgan  
Lisa Pamerter  
Emma Paterson  
Hayley Phipps  
Millie Russell  
Ellen Seaniger  
Angie Skirving  
Karen Smith

## Queensland Blades

Mitchell Baker  
Scott Brennan  
Kiel Brown  
Jacob Burns  
Dean Butler  
George Clutton  
Liam DeYoung  
David Donnelly  
Jamie Dwyer  
Nathan Eglington  
Troy Elder  
Tobias Figura  
Ben Flemming  
Robert Hammond  
Mark Knowles  
Stephen Lambert  
Peter Morris  
David Reid  
Jason Wilson

## Under 21 Women's

Teneal Attard  
Jane Bennett  
Madonna Blyth  
Ally Boland  
Rania Burton  
Julianne Campbell  
Amy Chalk  
Kirsten Drysdale  
Prue Eiser  
Veronica Hazelman  
Jaimie Hedge  
Teagan Holcroft  
Lisa Hughes  
Amy Korner  
Thea Lazarus  
Kristin Litzow  
Minka McLeod  
Sally O'Toole  
Lisa Pamerter  
Emma Paterson  
Rebecca Reuter  
Lauren Richards  
Jodie Schultz  
Ellen Seaniger  
Jodie Searle

## Queensland Men's Country

Queensland Country Men's team will be competing in the Australian Country Championships in Berri, SA from the 30th July to the 6th August 2005.

Dale Agnew  
Damien Aguis  
Cris Ahern  
Doug Armit  
Michael Bartlett  
Nigel Giacomi  
Aaron Grigg  
Aaron Harmsworth  
Ray Hughes  
Byron Jones  
Andrew Landsberg  
Mark Llewelyn  
Nathan McFarlane  
Brenton Sippel  
Callan Short  
Gary Tippett  
Andrew Ward  
Adam Williamson



## Queensland Women's Country

Queensland Country Womens Team will be competing in the Australian Country Championships in Berri, SA from the 30th July to the 6th August 2005.

Carrie Andrews  
Jessica Chad  
Hayley Childs  
Anna Dunsdon  
Bonnie Eiser  
Hayley Elder  
Jodie Fraser  
Katrina Frew  
Thea Lazarus  
Kristin Litzow  
Leith Morris  
Tiffany Newson  
Sonya Noonan

Justine Parkes  
Bernie Robson  
Emma Rowe  
Jade Scouller  
Jodie Searle  
Josie Smith  
Louise Symonds  
Emma Walter  
Fiona Williamson  
Melanie Winkleman



**GET YOUR JUST REWARDS !**

Support those Queensland businesses that support the Hockey Queensland community.

**NEW DEALS**

**One-Zero Telecommunications** – special Hockey Qld members deal available now!

- Archie's Boat Licence Training Centre** – 10% off training courses
- Breakfree Resort Apartments** – huge savings on accommodation
- Brisbane Health Physiotherapy** – 10% off all treatments
- The Coffee Club** – Special price on VIP cards
- Downtown Toyota** – 15% off all car servicing
- Membership Services** – 70% discount
- Quest Apartments** – 15% off rack rates
- Wet'n' Wild** - Special prices for group bookings. \*Conditions apply

Please visit the Hockey Queensland website on

[www.hockeyqld.com.au](http://www.hockeyqld.com.au)

and choose 'Rewards' on the home page for more information about each company and its offers.

**SUPPORTING THOSE WHO SUPPORT YOU.  
HOCKEY QUEENSLAND'S 2005 SPONSORS**

Alpha Sport  
[www.alphasport.com.au](http://www.alphasport.com.au)



Four'n Twenty  
[www.fourntwenty.com.au](http://www.fourntwenty.com.au)



One Zero  
[www.one-zero.com.au](http://www.one-zero.com.au)



American Express  
[www.americanexpress.com/australia](http://www.americanexpress.com/australia)



OAMPS  
[www.oamps.com.au](http://www.oamps.com.au)



Quest Apartments  
[www.questapartments.com.au](http://www.questapartments.com.au)



Cat Rental  
[www.hastingsdeering.cat.com](http://www.hastingsdeering.cat.com)



Just Hockey  
[www.justhockey.com.au](http://www.justhockey.com.au)



Streets  
[www.streets.com.au](http://www.streets.com.au)



Colmslie Sports Club  
[www.southsidesportsclub.com.au](http://www.southsidesportsclub.com.au)



Kombat  
[www.kombat.com.au](http://www.kombat.com.au)



Southbank Inst  
[www.southbank.tafe.au](http://www.southbank.tafe.au)



Coca-Cola  
[www.cocacola.com.au](http://www.cocacola.com.au)



Konica Minolta  
[www.konica.com.au](http://www.konica.com.au)



Whitehills  
[www.whba.com.au](http://www.whba.com.au)



E Banc  
[www.ebanctrade.com.au](http://www.ebanctrade.com.au)



Kookaburra  
[www.kooka.com.au](http://www.kooka.com.au)



Wolf Blass  
[www.beringerblass.com.au](http://www.beringerblass.com.au)



Energex  
[www.energex.com.au](http://www.energex.com.au)



Medibank Private  
[www.medibankprivate.com.au](http://www.medibankprivate.com.au)



Fourex  
[www.xxxx.com.au](http://www.xxxx.com.au)



For more hockey information, news about upcoming and past events, photos and stories please visit [www.hockeyqld.com.au](http://www.hockeyqld.com.au) or [www.hockey.org.au](http://www.hockey.org.au)

Garry West-Bail	General Manager
Janne Ellis	Operations Manager
David McNeil	Coaching and Development Manager
Ebony Blake	Administration Officer
Natalie Donoghue	Project Officer
Kerri Burford	Office Supervisor
Greg Gunner	Facility Coordinator
Paul Coomber	Trainee Groundsman



Location: 400-420 Lytton Road  
 Phone: 07 3399 6577  
 Fax: 07 3399 6969  
 Email: [office@hockeyqld.com.au](mailto:office@hockeyqld.com.au)  
 Mailing: PO Box 246  
 Morningside, QLD, 4170  
 Web: [www.hockeyqld.com.au](http://www.hockeyqld.com.au)