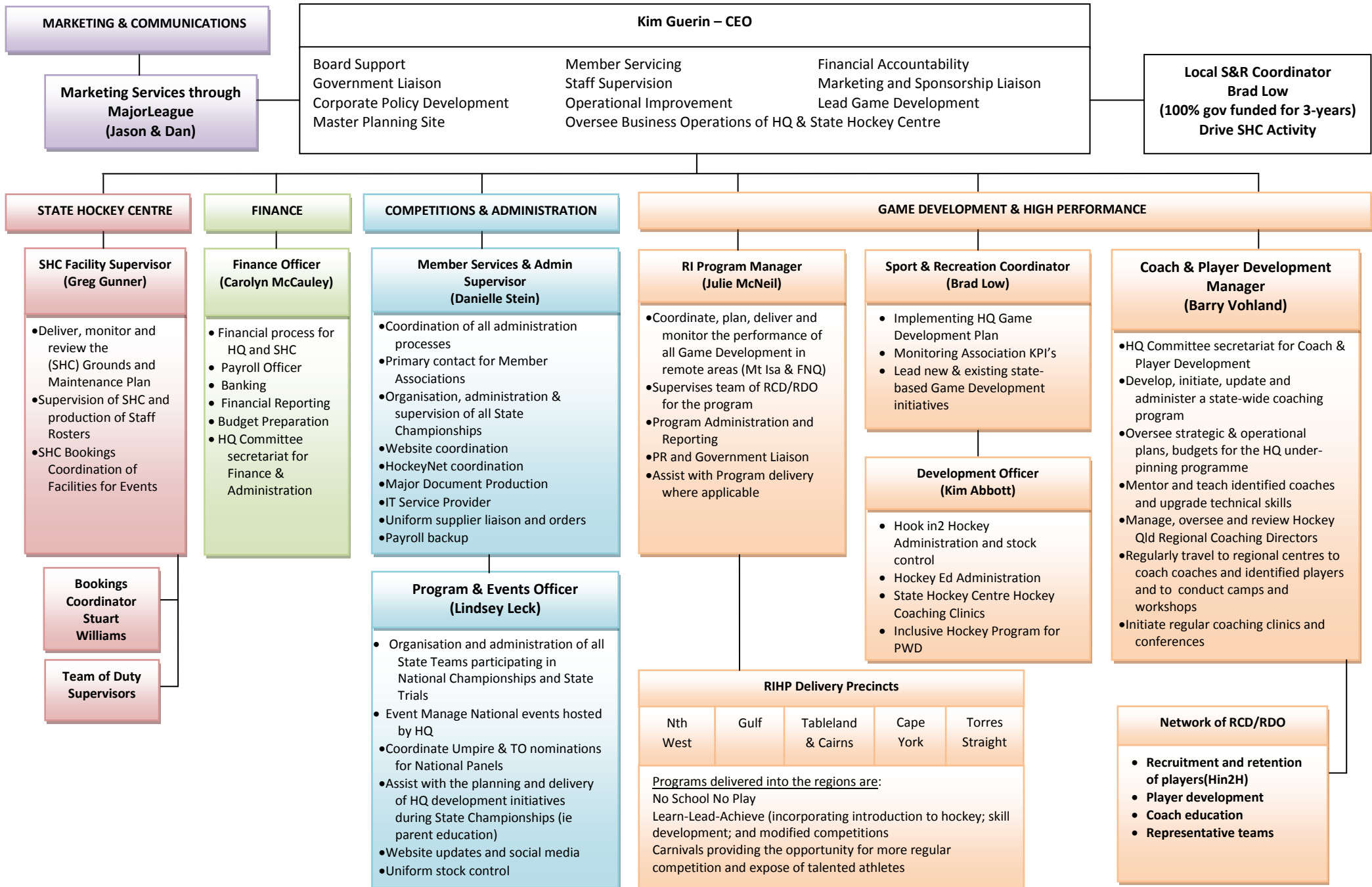


Hockey Qld Staffing Structure – as at 10th April 2012



MARKETING & COMMUNICATIONS

Marketing Services through MajorLeague (Jason & Dan)

Kim Guerin – CEO

Board Support
Government Liaison
Corporate Policy Development
Master Planning Site

Member Servicing
Staff Supervision
Operational Improvement
Oversee Business Operations of HQ & State Hockey Centre

Financial Accountability
Marketing and Sponsorship Liaison
Lead Game Development

Local S&R Coordinator Brad Low
(100% gov funded for 3-years)
Drive SHC Activity

STATE HOCKEY CENTRE

SHC Facility Supervisor (Greg Gunner)

- Deliver, monitor and review the (SHC) Grounds and Maintenance Plan
- Supervision of SHC and production of Staff Rosters
- SHC Bookings Coordination of Facilities for Events

Bookings Coordinator Stuart Williams

Team of Duty Supervisors

FINANCE

Finance Officer (Carolyn McCauley)

- Financial process for HQ and SHC
- Payroll Officer
- Banking
- Financial Reporting
- Budget Preparation
- HQ Committee secretariat for Finance & Administration

COMPETITIONS & ADMINISTRATION

Member Services & Admin Supervisor (Danielle Stein)

- Coordination of all administration processes
- Primary contact for Member Associations
- Organisation, administration & supervision of all State Championships
- Website coordination
- HockeyNet coordination
- Major Document Production
- IT Service Provider
- Uniform supplier liaison and orders
- Payroll backup

Program & Events Officer (Lindsey Leck)

- Organisation and administration of all State Teams participating in National Championships and State Trials
- Event Manage National events hosted by HQ
- Coordinate Umpire & TO nominations for National Panels
- Assist with the planning and delivery of HQ development initiatives during State Championships (ie parent education)
- Website updates and social media
- Uniform stock control

GAME DEVELOPMENT & HIGH PERFORMANCE

RI Program Manager (Julie McNeil)

- Coordinate, plan, deliver and monitor the performance of all Game Development in remote areas (Mt Isa & FNQ)
- Supervises team of RCD/RDO for the program
- Program Administration and Reporting
- PR and Government Liaison
- Assist with Program delivery where applicable

RIHP Delivery Precincts

Nth West	Gulf	Tableland & Cairns	Cape York	Torres Straight
----------	------	--------------------	-----------	-----------------

Programs delivered into the regions are:
No School No Play
Learn-Lead-Achieve (incorporating introduction to hockey; skill development; and modified competitions
Carnivals providing the opportunity for more regular competition and expose of talented athletes

Sport & Recreation Coordinator (Brad Low)

- Implementing HQ Game Development Plan
- Monitoring Association KPI's
- Lead new & existing state-based Game Development initiatives

Development Officer (Kim Abbott)

- Hook in2 Hockey Administration and stock control
- Hockey Ed Administration
- State Hockey Centre Hockey Coaching Clinics
- Inclusive Hockey Program for PWD

Coach & Player Development Manager (Barry Vohland)

- HQ Committee secretariat for Coach & Player Development
- Develop, initiate, update and administer a state-wide coaching program
- Oversee strategic & operational plans, budgets for the HQ underpinning programme
- Mentor and teach identified coaches and upgrade technical skills
- Manage, oversee and review Hockey Qld Regional Coaching Directors
- Regularly travel to regional centres to coach coaches and identified players and to conduct camps and workshops
- Initiate regular coaching clinics and conferences

Network of RCD/RDO

- Recruitment and retention of players(Hin2H)
- Player development
- Coach education
- Representative teams